

Bidding
Challenge 8

Forthcoming
events 19

Master Point
of View 16

Promotions
17

Results
3



WELSH BRIDGE UNION

Newsletter 79, May 2003

Photo finish in Challenge duel

Two players ran neck and neck for the coveted top prize in the second Welsh Bridge Union Bidding Challenge, leaving officials scratching their heads over the destination of the cash award. “Not since the *Who Wants to be a Millionaire* fraud trial have audiences been so gripped by a contest”, declared a spokeswoman for the organisers. *Full report Page 8.*



Board reshuffle: “No surprises”

The AGM of the Welsh Bridge Union looks set to return the same officers as in 2002-2003, with the exception of the Chairman – this prestigious post

traditionally rotates between the four Areas and Graham John of West Wales is lined up for the job. Voting on the new line-up takes place at 11.30 on 18th May, at Gwent Bridge Academy. The AGM is open to all members.

Tom Kenny

The popular North Wales bridge player, Tom Kenny, died on 2nd January.

Obituary Page 2.



Swansea Congress
28th-29th June 2003
In aid of the Wales Air Ambulance.



Contact Diana Panniers for details, or see Page 19.

Letters to the Editor



From Mike O'Leary, of Llantrisant:

In issue 78 the article "Anything you bid ..." intrigued me because of its abject pointlessness. Does it mean that every club, congress etc. should (or must) keep a psyche book and at intervals (annually, monthly, immediately) submit reports to WBU L&EC? For what purpose? Is there to be a disciplinary process? Is it to be the psyche itself, or a fielded psyche, or both, that results in what? A name or names on a list or in a (black) book?

Why doesn't the L&EC grasp the nettle and outlaw psyches, which are defined as deliberate misrepresentations of one's hand in some major respect to gain a tactical advantage? Alternatively why doesn't the WBU L&EC present a rational, ethical argument for a psyche's legality? Personally I'll take some convincing that a psyche or a divergence from a partnership convention card can ever be justified, since by definition both are designed to obtain a tactical (i.e. unfair) advantage.

Anne Jones, Chairman of the Laws & Ethics Committee, replies as follows:

Psyches are a legal ploy according to Law 75B. The L&EC has no authority to regulate this Law, so cannot make psyches illegal. This Law is perfectly sensible in this respect, because to ban psyches and misbids would be to ban mistakes, and that is a silly thing to do.

What the L&EC can and does do however is keep a record of all recorded psyches and misbids, their classification according to the OB regulations, and the names of the partnership. That way any apparent agreement to play an illegal system becomes apparent, and yes - disciplinary action can, and probably would, be taken.

It is normal for the records of all psyches in National events and Congresses to be recorded, and some clubs submit their records too. The more clubs that do this, the more likely it is that the L&EC will detect a

pattern of fielded psyches within a partnership where there is one.

Thank you for your interest

Obituary: Tom Kenny

Tom Kenny was not well known as a competitive bridge player – he rarely played in national events. However in North Wales he was well known and very popular in the bridge clubs. His popularity in all walks of his life was evident at his funeral which was standing room only and this was a fitting tribute to the man as his helpfulness and generosity was well known to bridge players and non bridge players alike.

My earliest memories of Tom are of him and Mum sitting in our back room discussing the hands post Monday night at Shotton bridge club. He usually had a tippie of something in his hand. The discussion was always good humoured and fun and it gave me a positive view of bridge.

Later on we met across the bridge table when he played at Mold and Flint bridge clubs.

Tom was an excellent player, drawing on his analytical skills that made him a very successful businessman. He avoided competitive bridge, especially in his later years. This was because he was a gentleman in the true sense and he played bridge for the game and in the spirit of the game. He had little time for gamesmanship and people who were too keen of the law especially when it impacted on those whose main error was ignorance and naivety rather than deliberate intent. I feel that this came from his seeing bridge as something to be enjoyed and a primarily social as well as competitive event.

I owe Tom gratitude for his sense of honour, his support, both financial and moral. He was a straight talking man who liked honesty, whisky and a bit of fun. North Wales bridge clubs have lost a good man.

Krista Stephenson

RESULTS



National Mixed Pairs

Elephant & Castle, Newtown, 8th-9th February 2003

1 st	Peggy McCombie, Brian Harden	58.83%
2 nd	Jill Knight, Bob Mitchell	56.70%
3 rd	Diana Harris, Paul Gagne	56.46%



Peggy McCombie and Brian

East Wales Congress

14th-16th February 2003

Pairs

1 st	Patrick Jourdain, Filip Kurbalija	63.77%
2 nd	Gerald Nodding, Maureen Parker	63.14%
3 rd	Avis Robertson, Jo Whitty	62.50%

Swiss Teams

1 st	Jane Jensen, David Jensen, Chris Jagger, Ian Pagan	201 VPs
2 nd	Filip Kurbalija, Tim Rees, Patrick Jourdain, Ted Martin	198
3 rd	Liam Sheridan, Paul Denning, Andrew Scott, Adrian Thomas	174

National Open Pairs

Elephant & Castle, Newtown, 1st-2nd March 2003

1 st	Gordon Roxburgh, Hayden Dando	57.70%
2 nd	Pam Edwards, Brian Edwards	56.32%
3 rd	Elwyn Roberts, David Williams	55.41%

Portland Pairs 2003

NORTH WALES

1st Sheila Shea, Paddy Murphy 59.42%

SOUTH WALES

1st Sheila Leyshon, Keith Jones 59.19%

The top national placings from each heat were (North Wales): Tony and Pat Murphy 14th, (South Wales): Gilly Clench and Adrian Thomas 23rd.

National Ladies' Pairs

National Men's Pairs

Holt Lodge, Wrexham, 12th-13th April 2003

1 st	Annie Favager, Diana Harris	58.96%	1 st	David Birt, Geoff Evans	57.11%
2 nd	Susan Ingham, Laura Woodruff	58.18%	2 nd	Keith Shuttleworth, Brian Nicholls	56.00%
3 rd	Jill Knight, Joan Marray	54.32%	3 rd	Paddy Murphy, David Stevenson	55.78%

Llandudno Spring Congress (25th-27th April 2003)

Swiss Teams

1 st	Geoff Wolfarth, Brian Senior, Nevena Senior, Sandra Penfold	202 VPs
2 nd	Martin Cantor, Ted Reveley, Ralph Churney, Bill Niccol	187
3 rd	John Salisbury, Adrian Thomas, Simon Edwards, Jim Luck	175

International Round-up



Camrose

In our final match of the season against Northern Ireland on 22nd-23rd February, at the Holt Lodge Hotel, Wrexham, Wales (Filip Kurbalija, Tim Rees, Paul Denning, Adrian Thomas, Gary Jones, Dafydd Jones) suffered a disappointing 40-50 defeat against a strong North Ireland team.

The final weekend took place in the Republic of Ireland, with Wales sitting out. Results in the final two matches left Wales trailing, for sadly our worst overall result in some years. Congratulations to the squad, though, on some excellent performances within a patchy season, and to England for a convincing victory.

Lady Milne

The Women's Home International weekend will be held on 6th-8th June 2003 at the Moat House, Cardiff. Spectators are welcome – please come and support our team (Mary Moore and Irene Thomas, Jill Casey and Diane Kurbalija, Liz Atkinson and Margaret Lane).

The Beautiful Game

David Hamilton

Some say that bridge is a beautiful game played by nasty people. I have come across some nastiness at tournament and highly competitive level but here is some of the beauty to compensate.

Dlr: North ♠ 10 6 5 3
Vul: NS ♥ A K Q J 2
 ♦ Q
 ♣ K 5 4

♠ Q J	♠ A 2
♥ 9 7 6	♥ 10 5 3
♦ K 9 8 6 4	♦ 10 7 5
♣ 10 8 3	♣ A Q 9 7 2
♠ K 9 8 7 4	
♥ 8 4	
♦ A J 3 2	
♣ J 6	

North	East	South	West
1♥	Pass	1♠	Pass
3♠	Pass	4♠	All Pass

This deal is from a World Championship match between USA and China and the game contract looks secure, as the favourable trump position should allow declarer to win four spades, five hearts and the ♦A.

Both Wests, Zia Mahmood and Li Xin, led a club at trick one and the East players, Michael Rosenberg and Wang Xiaio found the right play to cash the club queen and ace and a third round. South discarded a diamond and, with the lead in dummy both declarers led a trump. Both the East players went up with the ♠A and played a fourth round of clubs which promoted West's queen for one down. A flat board, fantastic.

SITS VAC

New editor required for high-profile quarterly newsletter. If no one feels able to take on the whole job, volunteers for collating parts of the Newsletter such as Results or the International page would be welcomed. More information from Linda Greenland (deri31@ntlworld.com) or Laura Woodruff (laura.woodruff@ukonline.co.uk).

Mikeys Musings: An Addiction to Double Cards

by Mike Close

Just an ordinary Pairs night at the local Bridge Club...

Board 19

Dlr: South ♠ A K J 7 4 3
 Vul: EW ♥ K J 3
 ♦ K 7
 ♣ J 3

♠ Q 2	♠ 10 9
♥ A 6 5	♥ 8 4
♦ Q 8 4 3	♦ A J 5 2
♣ A K 8 2	♣ Q 10 9 7 5

♠ 8 6 5
 ♥ Q 10 9 7 2
 ♦ 10 9 6
 ♣ 6 4

West	North	East	South
-	-	-	Pass
1NT	Dbl ¹	All Pass	

¹ Before bidding, North asks East "Is that weak or strong?". East (known for his fun attitude to bridge, especially bidding) says "Strong, 15-17" with a big grin. "Yeah right" says North and slaps the double card down. A few moments later he reels off his spades from the top, and with six tricks in front of him he looks around for inspiration from partner's discards, which have included two clubs. West promptly claims, 5 clubs and two red aces.

EW +180 (14 Matchpoints out of 14)

Board 20

Dlr: West ♠ K 5 4
 Vul: All ♥ A K 9 8 7
 ♦ A J
 ♣ K 9 2

♠ 9 3	♠ A Q J 10 6
♥ 5 4	♥ Q J 2
♦ 10 9 8	♦ K Q 7 6 2
♣ A Q J 8 5 3	♣ void

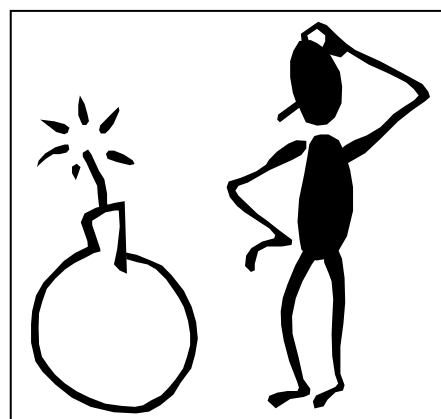
♠ 8 7 2
 ♥ 10 6 3
 ♦ 5 4 3
 ♣ 10 7 6 4

East-West have a minor bidding misunderstanding ...

West	North	East	South
Pass	1♥ ¹	2♥ ¹	Pass
2NT ²	Dbl ³	Pass ⁴	Pass
3♣ ⁵	Dbl ⁶	Redbl ⁷	Pass
Pass ⁸	Pass ⁹		

No explanations were made at the table during the bidding, but here are the thoughts of the participants:

- ¹ E: Michaels, but indicating Spades and Diamonds
 W: Michaels, showing Spades and a Minor.
- ² E: Natural
 W: What is your minor? (and partner's forgotten to alert, as usual).
- ³ Extra values
- ⁴ E: Well, I've bid my hand. I quite fancy 2NT doubled to play.
 W: Weak, presumably, with spades and a minor.
- ⁵ E: Partner's bid clubs, naturally, why?
 W: I wonder which minor partner has? I'll bid clubs (which I've got anyway), partner will pass or correct.
- ⁶ My favourite bidding card
- ⁷ E: Ooo! I don't like this! I'll redouble for rescue
 W: Cool! partner has clubs as well.
- ⁸ W: Shall I raise? Nah, partner is weak. I'll bet this doesn't get passed out! (Wrong!!)
- ⁹ E: Cojones!



Gulps all round as dummy goes down, and explanations are made.

North starts with three rounds of hearts, dummy winning and declarer pitching a spade. West then plays ace and queen of spades, ruffing small. NS 2 tricks, EW 3 tricks.

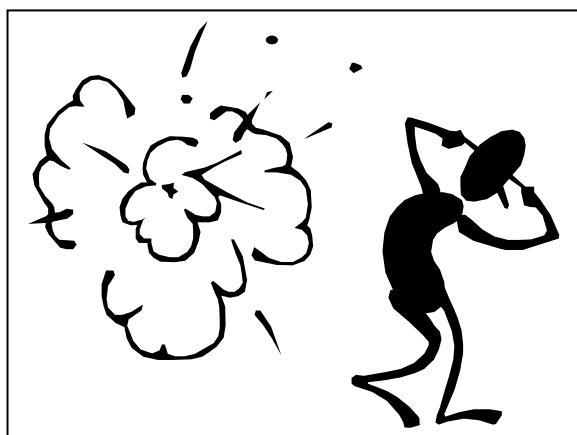
The 10♦ is next and North ponders before going in with the ace and returning the jack. Dummy wins and another spade is ruffed, bringing down the king. NS 3 tricks, EW 5 tricks.

A sly jack of Clubs is ducked by North, and the ace of clubs cashed. It's all over now. Here is the position with NS 3 tricks, EW 7 tricks:

<p>♠ none ♥ 8 7 ♦ none ♣ K</p>	<p>♠ 10 ♥ none ♦ Q 7 ♣ none</p>
<p>♠ none ♥ none ♦ 8 ♣ Q 8</p>	<p>♠ none ♥ none ♦ 5 ♣ 10 7</p>

Declarer plays his last diamond, and North eventually throws a heart (ruffing will do him no good, as he will have to take the trump finesse for declarer). Declarer ducks in dummy and South helplessly follows. Now the ♣8 loses to the king, but the queen of clubs wins the last trick for declarer. Nine tricks, and stunned silence, before everyone looks up the score.

EW +840 (and 14 Matchpoints out of 14)



Board 21

Dlr: North ♠ K Q 7 6
Vul: NS ♥ A 8 5 3
♦ K 10 6 2
♣ 7

<p>♠ 4 ♥ K J 9 7 4 ♦ 9 ♣ Q J 9 8 6 2</p>	<p>♠ A 10 5 3 2 ♥ 2 ♦ A 8 ♣ A K 10 5 4</p>
<p>♠ J 9 8 ♥ Q 10 6 ♦ Q J 7 5 4 3 ♣ 3</p>	

West	North	East	South
-	Pass ¹	1♠	Pass
1NT ²	Pass	2♣ ³	Pass ⁴
5♣ ⁵	Pass ⁶	6♣ ⁷	Pass
Pass ⁸	Dbf ⁸	Redbf ⁹	Pass ¹⁰
All Pass			

- ¹ Destroyed by the previous board, North forgets to open the bidding
- ² Should bid 2♣. But partner, with two tops at this table already, is bouncing in his chair like Tigger. Expecting East to bid diamonds next, West chooses a bid to slow partner down, intending to bid 3♣ later.
- ³ Visibly restraining himself, East bids his second suit at the two level.
- ⁴ Delayed, as West has fallen off his chair.
- ⁵ Catching up.
- ⁶ Slowly – has found his 12 points, and cannot understand the bidding.
- ⁷ Spluttering, restrained no longer.
- ⁸ Ditto.
- ⁹ Touching faith in partners bidding.
- ¹⁰ Bemused, and wishing she had removed the double cards from partners bidding box before this hand! (or better still, before this round started).

East plays a heart to the jack (and ace) early, pulls trumps in one round and then claims.

EW +1380 (and 14 Matchpoints out of 14, naturally!)

North wishes E-W health and happiness as they leave the table (yeah, right!)

mg.close@ntlworld.com

Bridge in Bishopston's Schools

By Marian Brooke

I have found that good weather is bad for bridge. Football, netball and athletics take their toll - also violin lessons, gymnastics, detention etc. etc. Unfortunately the bright sparks who are really keen to learn are usually into everything else.

Numbers have fluctuated since I started some sixteen months ago. I now have three children who are playing "Bridge Proper," and thirteen regular Minibridgers, six of whom will be learning bidding this coming term. I also have several players who turn up now and again when the fancy takes them or the weather is shocking. (When it snowed, however, I didn't get a soul - snowballing took precedence).



I wanted the two schools to play together in a competition. Bill Nicholls kindly provided Mumbles Bridge Club and went above and beyond the call of duty by arranging the hands so that everyone had a turn at playing. This made for a much more cheerful game. The two little ten year olds who won were delighted with 76% - the senior school pupils were not! Mr. Bowen, the Headmaster of Bishopston Junior school, was also impressed and called them up at Assembly to congratulate them. This did my bridge classes no harm at all.

Incidentally, I would like to mention how supportive both Mr. Bowen and Mrs. Williams, the Headmistress of Bishopston Comprehensive school, have been. They have given their backing to all I have suggested and requested and then left me alone to get on with it.

The competition made me realise that I had to curtail some of the children's bad habits - the boy who stands up, clenches his fists over his head and roars 'Yes!' when he makes his contract, the little nine year old girl who thought a game in clubs was ten tricks and sobbed when she went one down, and the ten year old boy who told his partner "remember to take the trumps out" and then, when partner played and forgot, gently patted dummy's trumps until the message finally got home. All this, however, means that they care.

I keep saying I, actually it should be we, because I have always had willing volunteers to help me with the Minibridge (about a dozen on and off over the sixteen months). Marion Parish, however, has been a regular and has taken over the Bidding Class.

Daphne Patrick invited my bridge players for a Training Day at Gwent Academy. We went and had an excellent day. My three pupils enjoyed themselves and found it very informative and interesting. The lecture lasted about an hour and a half - about an hour more than they are used to - and they lapped it up.

I'm hoping that Daphne will bring her pupils to Bishopston and that we can have a Teams match - both 'Bridge Proper' and Minibridge - between the three schools.

Finally, I would like to thank Graham John for initially getting me into the schools and for his support during the past sixteen months.

P.S Marion Parish says two of her students give high fives over the table when they get the declarer down. A no-no, I think.

Bidding Challenge No. 2

Many thanks to the panel for their time and comments; we haven't got the space to show them all here, but they are all on the WBU website (www.wbu.org.uk/bid2.htm). This was a tougher set than the first. Congratulations to Sue Ingham and Mike Close who led the field with 71 out of 80.

Sue's name came out of the hat first, so she wins the £25 for this issue.

Other good scores: Betty Lewis and Annie Favager 70, Simon Richards and David Williams 68, Eleanor Price 67, MJ O'Leary and Mark Roderick 65.

Mike Close leads the year to date prize with 151, followed by Sue Ingham with 145 and David Williams with 142.

Set 3 is on Page 12 – don't forget that there's a £100 prize for the best cumulative score in 2003. Answers to Linda Greenland by post or email (deri31@ntlworld.com).

The Experts' View

Question 1

Dlr: East

Vul: EW

Scoring: IMPs

South

♠ K

♥ J 10 7 5

♦ K 3

♣ A K Q J 10 4

West	North	East	South
-	-	2♥ ¹	2NT
Pass	3♥ ²	Pass	3♠
Pass	4♦	Pass	?

¹ Weak 5-9 HCP

² Transfer

Marks: 6♣ 10, 4♠ 8, 4NT 7, others 5

For the majority: **Tim:** 6♣. I effectively have to pick the final contract here. The choices are 4♠, 4NT and 6♣; anything else should agree diamonds and risks partner jumping to 6♦. 4♠, 4NT and 6♣ could all go off if partner has the wrong cards. As 6♣ gives the biggest benefit when it's right, I'll gamble on partner having a singleton heart.

Adam: 6♣. I know the right answer to this one because I got it wrong against England! 4♦ is a slam try and you've got a nice hand - I know it's a bit of a punt but if you're going to bid slam then it's probably right to bid 6♣ now before the auction gets complicated. I tried to find out more about the hand and ended in the wrong slam (trumps Kx opposite AQ10xx, which didn't come in).

Jim: *agreed with 6♣ and made another good point:* It is not particularly relevant here, but I would have bid 3NT over the 3♥ transfer showing a skewed 2NT overcall, with

shortage in the transfer suit. *Then the dissenters:*

Jill: 4NT. Sign-off. I wouldn't have bid 2NT, preferring 3♣.

Alex: 4♠ discouraging partner's ambitions.

It will be difficult to convince your partner than this is your hand but you are well worth a slam shot opposite partner's bidding (pray you don't have two red losers!)

Question 2

Dlr: North

Vul: All

Scoring: Teams

South

♠ 6

♥ A Q 9 8 5 3

♦ A K Q 9 3

♣ 9

West	North	East	South
-	Pass	1♠	2♠ ¹
3♠	Pass	Pass	Db1 ²
Pass	4♣	Pass	?

¹ Red suits 5-5

² Good hand

Marks: Pass 10, 4♦/♥ 8, others 5

Paul: 4♦. Not an everyday sequence. Is 4♣ pass or correct to diamonds? It certainly doesn't look like clubs is the right suit. Partner can still correct diamonds to hearts if they wish to.

Jim: 4♦: A double in this position suggests to me the possibility of playing in the third suit i.e. a shape such as 0553. Thus I have no intention of playing with a singleton in a suit which partner has been unable to bid on the first two rounds and for which partner may

believe I have some support. As between 4♦ (good suit) and 4♥ (extra card) I think it is close but opt for the former as I'm less likely to be doubled if there is a trump stack. Partner will convert with equal or better hearts.

Geoff: 4♥: Partner may have 6 or 7 clubs, but I want to play the hand. 4♥ should imply the longer or better suit, and also attracts the game bonus.

Tony: 4♥. Must be a play for game, even opposite two small hearts.

Dafydd: Pass: I expect partner has a 3127 shape or thereabouts. He could have tried 4♥ with a doubleton.

Adam: Pass. Tempted to bid 4♥ instead of previous double to show extra strength and length, but since I haven't I must pass.

Difficult to imagine that partner has passed the buck, and you have probably said it all, although it IS tempting to take a punt at 4♥.

Question 3

Dlr: North
Vul: NS
Scoring: Teams

South
♠ K 9 7 3 2
♥ Q J 8 7 4
♦ void
♣ A 9 5

West	North	East	South
-	Pass	1♣	2♣ ¹
2♥	3♥	Pass	?

¹ Majors

Marks: Pass 10, 4♥ 8, 4♦ 7, others 5

First the bidders: **Alex:** 4♥. Close to a pass, but partner doesn't know about my void. If in doubt, bid a vulnerable game.

Adam: 4♥. Tough one. I play that I only use Michaels/Ghestem when I am weak or strong, so I would just overcall a spade on this. Since I'm not allowed to do that I will probably bid one more ... because that's what I do when I'm not sure.

Jim: 4♥ seems normal with a 6-loser hand when partner has made a free bid of 3♥.

Then the trusting souls: **Paul:** Pass. Partner had an easy game try of 3♣ available, and although I have a reasonable hand, it is not enough to bid on.

Tim: Pass. Partner's bid is not constructive - if he wanted to invite he could bid 3♣ or 3♦ as a game try.

Agreed - as a passed hand partner would surely have tried 3♣ with any sort of good raise to 3♥, so you've said your bit already.

Question 4

Dlr: North
Vul: All
Scoring: Teams

South
♠ 7 5 4
♥ 10 8 4
♦ A K J
♣ A K J 10

West	North	East	South
-	Pass	Pass	1♣
1♠	Db1 ¹	Pass	?

¹ Take-out

Marks: 1NT 10, 2♠ 7, 2♣/2♥ 6, others 5

The panel were unanimous in bidding 1NT with this problem, unlike the contestants who almost universally bid a suit at the 2 level.

Jill: 1NT. Bid balanced hands as if they are balanced hands, we will worry about stops later. Opener's partner didn't raise, so my partner should have a stop.

Geoff: 1NT. Best practical bid. Partner may have a spade stop; if he doesn't they may run 5 or 6 tricks but I'm still favourite to make. Worst scenario is if partner raises to game with no spade stop, but such confident bidding might prevent a spade lead. 4♥ on a 4-3 fit looks unlikely to make as the long trump hand is forced.

Science to the rescue.....

Tim: 1NT. This shows the hand type and range. Partner should check for a spade stop if he is thinking of raising to 3NT. If he bids 2♣ "checkback", I will bid 2♠ to warn him I don't have a stop. If partner passes 1NT and they cash 5 spades then we are no worse off than the people who opened a strong 1NT.

Question 5

Dlr: North
Vul: EW
Scoring: Teams

South
♠ K Q
♥ A 10 6 3
♦ Q
♣ A 10 8 7 5 4

West	North	East	South
-	1NT ¹	3♦	?

¹ 12-14

Marks: Double 10, 3♣/3NT 8, others 5

Scientists first: **Dafydd:** Double for take out, if pard bids 3♠ I will probably bid 3NT but I wouldn't be happy.

Adam: Double. I assume I can play this for takeout. If partner bids 3♠ I bid 4♣ to show my hand (slam try in spades would go through 4♦).

Tim: Double, best played as takeout after a jump overcall of 1NT: it's far more common than a penalty double, and more useful - you can bid 3NT with a penalty double hand.

Now for the slambitious

Tony: 4♣. This must be natural and forcing, 7♣ could be on with the right cards.

Alex: 4♣ forcing with slam interest and the pessimist

Geoff: 3NT. Accept that you may have been fixed, and choose the most likely making contract. On point count, you're a bit thin for a slam and there's no room to investigate anyway.

You do need to discuss that 3NT is for take out, but 3NT is a very practical bid too.

Question 6

Dlr: East	South
Vul: All	♠ 10 7 4
Scoring: Teams	♥ A K 10
	♦ 7
	♣ A K J 7 6 4

West	North	East	South
-	-	Pass	1♣
Pass	1♠	Pass	?

Marks: 3♣ 10, 2♥ 9, others 5.

Jim: 2♥. Superior to the alternative of 3♣ as it will enable partner to make a much more informed decision about whether 3NT is the right spot. There is no problem if partner raises hearts, as he will then have 5 or more spades and we can return to spades at the same level.

Alex: 3♣, hoping partner doesn't pass with his 5 spades - 2♥ is an alternative

Paul: 3♣. Nothing is perfect here. At least after 3♣ I will have the chance of supporting partner if they bid a red suit.

Tim: 3♣ - worth it on playing strength. Partner probably has 5 spades, but he can show them over 3♣, so we shouldn't miss a spade fit. I rejected 2♥ as I don't like bidding 3-card suits unless there is no alternative.

So we could consider a reverse into 2♥ on a 3 card suit. These often end in tears but probably not here.

Question 7

Dlr: West	South
Vul: EW	♠ Q 8
Scoring: Teams	♥ 9 5 4
	♦ K 9 7 3 2
	♣ 9 7 4

West	North	East	South
1♥	1♠	2♥	Pass
4♥	Dbl ¹	Pass	?

¹ Good hand

Marks: Pass 10, 5♦ 8, 4♠ 7, others 5

Dafydd: 5♦. A tough decision but I think 5♦ is correct.

Paul: 5♦. A good hand for all partnerships to discuss. Does partner expect you to pass, take it out only if you have a good reason, or take it out if you have spade support or another playable suit. On this hand 4♥ may make, and 5♦ either makes or is a good save.

Geoff: 4♠. Our trump support isn't as bad as it might be, partner could well have 6. The danger of bidding 5♦ is if partner only has three, his hand will be forced on a heart lead so we can't draw trumps.

Tony: Pass. I'd expect 4♥ to be going down.

Tim: Pass. A good general rule when partner doubles a high level contract is to bid if you think you can make something, otherwise pass and hope it goes off. Here, we may make 4♠ if partner has 6 of them. However the Law of Total Tricks suggests that in that case 4♥ will be going down. We have 8 spades they probably have 9 hearts. If we make 4♠ the opposition will be 3 down in 4♥ (two down if we have a diamond fit as well).

Double is usually played as pass or take out to a making contract; very tough to choose here.

Question 8

Dlr: East

Vul: All

Scoring: Pairs

South

♠ J 10 7 4 5 4

♥ 10 5 3 2

♦ Q 5

♣ 8 6

West	North	East	South
-	-	1♥	Pass
1♠	Dbl	Pass	?

Marks: 2♦ 10, 1NT/2♣ 8, Pass 7, others 5

Jill: Pass. Horrible hand. Does pass on my right show <3 spades? 2♣/♦ will probably play very badly (cross ruffs) as I think partner has some heart length. I have no tricks for 1NT, so I pass and hope it is not too expensive. At teams I might bid.

Jim: 1NT. I know I am supposed to have better values, but I prefer the natural bid rather than bidding a non-existent minor suit with every likelihood of its being raised.

Paul: 1NT. I'm supposed to have more points for 1NT, but with both opponents bidding I just hope that partner might subside gracefully, or continue with 2 of a minor which I will pass.

Adam: 2♣. I bid the lower of equal length, we might have to run to 2♦ if doubled.

Dafydd: 2♣ ... Confidently!

Alex: 2♦. Not enough to penalise 1♠ so I will bid a confident 2♦ and take the medicine.

Tony: ♦. I haven't got enough to pass, and 1NT is out of the question. If they end up in NT I want a diamond lead rather than a club.

- *Good Point also made by Tim*

Tim: 2♦. Not good enough to pass. 1NT should show more values, and although it may bet us to our best fit, it makes it easier for the opposition to double us. They can double 1NT on points, then double two of a minor on trumps. 2♦ immediately may escape; if they have the wrong combination of points and diamond length they won't be able to double.

Next Challenge on Page 12.

Annie Favager wins the East Wales inaugural Victor Ludorum Competition for 2002/3 which involved the best 3 performances out of 5 named area events. Congratulations Annie!

LLANDUDNO SWISS PAIRS

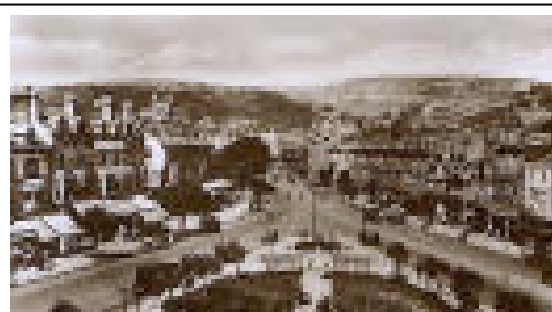
Saturday 12th and Sunday 13th July

The date of the Swiss Pairs is a week later than usual, so there is no clash with Café Bridge. It would be so nice to see you in Llandudno, North Wales' premier resort. If you have not been before you will enjoy the playing conditions in the Conference Centre which is situated on the seafront, and you will love the promenade, the shops, the restaurants, the castles, the theatre. If you can grab a couple of days extra, you will be able to make it a mini holiday as well. There are plenty of places to stay to suit all pockets (phone the Business Tourism Unit of the Conwy Borough Council, Tel: (01492) 574005)

This is a Welsh Bridge Union event and there are plenty of prizes and Green Points to be won. There will be twelve matches of eight boards each.

There is a mini brochure with booking form on the WBU website, or you can phone Jill Knight on (01248)853033 or Email on Polly64335@aol.com for a brochure.

We look forward to seeing you in Llandudno.



WBU Bidding Challenge – Set 3

Answers to Linda by 31st July 2003

Hand 1	EW VUL - Scoring: Teams				
♠ QJ54	West	North	East	South	
♥ KQ10	-		1♥	Pass	
♦ 832	2♥	2♠	3♥	?	
♣ AJ7					
Hand 2	Game All - Scoring: Teams				
♠ J43	West	North	East	South	
♥ None	1♥	1♠	4♥	?	
♦ AKJ52					
♣ AQ1065					
Hand 3	EW Vul - Scoring: Teams				
♠ 7	West	North	East	South	
♥ 9	Pass	1♦	Dbl	?	
♦ A985					
♣ 10987643					
Hand 4	NS Vul – Scoring: Teams				
♠ AKQ983	West	North	East	South	
♥ AJ742	-	1♦	Pass	1♠	(i) fourth suit forcing
♦ void	Pass	2♣	Pass	2♥ (i)	
♣ 54	Pass	3NT	Pass	?	
Hand 5	EW VUL - Scoring: Teams				
♠ AK8532	West	North	East	South	
♥ AK	-	Pass	Pass	1♠	
♦ Q8	2♥	2♠	Pass	?	
♣ 1062					
Hand 6	Love All - Scoring: Teams				
♠ AJ104	West	North	East	South	
♥ 53	-	-	3♣	Pass	(i) both majors
♦ Q104	Pass	4♣ (i)	Pass	?	
♣ A1042					
Hand 7	EW VUL - Scoring: Teams				
♠ K72	West	North	East	South	
♥ A84	-	1♦	Pass	1NT	
♦ J2	Pass	2♥	Pass	?	
♣ 86542					
Hand 8	Love all - Scoring: Pairs				
♠ K852	West	North	East	South	
♥ Q4	-	-	-	Pass	(i) Weak 6-10 HCP
♦ A865	2♦ (i)	Dbl	Pass	?	
♣ Q93					

The Welsh Bridge Union Accounts 2002-2003

The results of the WBU for the last two years are shown below; together with a forecast of what should happen in the year we have just entered. WBU Financial policy is to aim for a surplus in traditional activities equal to our investment income of £1,704; the actual surplus was £2,480. Once again, a change in our VAT status in 2002 makes it impossible to draw straight comparisons between the last two years, but as a result of the VAT changes the WBU is £1,000 better off.

Competition income has improved this year, profits from our two Simultaneous Pairs doubled to £1300, and savings have been made in event costs. Participation in competitions, as opposed to congresses, continues to fall.

Trials expenses increased as the selectors held a full complement of trials, several having been cancelled the previous year. WBU Officers received a 10% increase in Honoraria this year after a 4-year moratorium. Meeting costs have risen as the WBU raised its mileage rate from 18p to 30p per mile.

The year ahead is a challenge for the WBU; we will be running two new congresses in May and October, as well as hosting the Lady Milne in June. We will continue to support areas in their efforts for Junior Bridge, and for the first time will be sending

Welsh Juniors to the World Junior Pairs & Camp in Hungary.

2003, being an odd numbered year, has no major World events for selected Welsh teams, so the World fund will rise substantially – this will be spent in even numbered years when there are always two major events.

The figures above and this commentary have of necessity been summarised; a full copy of the accounts has been sent to every club. If members have further questions they are welcome to attend the AGM or contact me directly.

Income	Year ended 31/3/2002	Year ended 31/3/2003	Estimate 31/3/2004
Subscriptions	9270	9285	9300
Less WBF / EBL	(1831)	(1781)	(2000)
Net WBU Subs	7439	7504	7300
Masterpoints	6916	8777	8700
Congresses	9942	9796	12000
Competitions	4138	5974	5500
Other Income	1751	1766	2000
Total Income	30186	33817	35500
Expenses			
Home Internationals	16468	15482	18000
Trials & training	1721	2377	2000
Honoraria & Fees	2965	3415	3500
Meetings	1430	2149	2000
Member Publications	2975	2930	3500
Other expenses	4040	4984	4500
Excess income	587	2480	2000
Total	30186	33817	35500
World Fund			
NCBO Income	17690	17976	20000
Less Expenses	(11332)	(15732)	-7000
Increase in Fund	6358	2244	13000

Linda Greenland, Hon. Treasurer

Odds and Ends

From Anna Gudge of Ecats

I have, as many of you will know, taken on the EBU Website, which is great fun. There is a lot of work to do still, but I do feel it is starting to take shape (I hope you agree). Anyway, if you go to www.ebu.co.uk you will find information about the WBF Junior Pairs and Camp, so if you are a Junior player, or you know of any under-25s who might be interested, then do let them know that the information is there. It is really important that we encourage our youngsters as much as possible and I am sure they would enjoy the Pairs and Camp.

Next, have a look at the details about the World Championships, which will be held in beautiful Monte Carlo from 2nd – 15th November. You can apply to your Union for nomination to play in the Transnational Open Teams, which is held during the second week – it gives you a unique opportunity to play in a very prestigious event while at the same time enjoying all the atmosphere and excitement of the final stages of the Bermuda Bowl & Venice Cup. The WBF has been able to extend the Transnational Teams Championship by a day, and it will now start at approximately 18.00 hours on Monday 10 November and finish with the Semi Final and Final on Friday 14 and Saturday 15 November.

More details are on my website at www.ecatsbridge.com.

Anna

Sicilian Open Bridge Tournament

Cefalù - Costa Verde Hotel

Open Pairs

2003, November 26th-27th

Open Teams

2003, November 28th-30th

A nice tournament, as your editor can vouch. Contact Linda Greenland for more information.

WBU Newsletter Issue 79

West Wales results

Ladies' Pairs (held 9th March)

1 Binnie Job and Carmel Wiseman 54.17

2 Sheila Leyshon & Janet Rees 53.47

=3 Nickie Hancock & Irene Warlow 52.43

=3 Val Kennewell & Diana Panniers 52.43

Men's Pairs (held 9th March)

1 Chris Overton & Gareth Jones 59.35%

2 John Jamieson & Bob Alderdice 56.46

3 Alex Melville & Mike Reed 54.55

We do our best, but ...

“A very exciting competition. Things went well until the last two rounds when half the lights went out. Fortunately it was a sunny day and play continued as normal. The hotel staff were unable to deal with this problem which did affect other parts of the hotel. I had to move my computer upstairs to do the scoring.”

Carl King, Director, Nat. Open Pairs final

Around the ash bucket

The unseasonable Easter weather lured me away from my smoke-filled office into the garden, where I spent four happy days digging up sumach roots, planting shrubs and constructing a chicken coop in an old pigsty. The chickens (Edna, Dolly, Babs and Bunty – don't ask) are prolific layers, not always in the bijou two-storey laying-box which we provided for the purpose, so my days are now enlivened by the evening egg-hunt. I am often accompanied by the two cats, though I'm not at all sure that the stalking pose they adopt is prompted by a helpful disposition.

Jon wants us to put a pig in the other sty, but despite the built-in abbatoir (see Newsletter 77) I don't think I can bear the inevitable end.

All this outdoor activity is a sorry distraction from WBU business; had I more discipline I would not be putting this issue to bed at 1.35 a.m. Never mind, Monday's yet another bank holiday.



Menorca Once More

HOTEL S'ALGAR, MENORCA - 10th-24th October 2003

The Hotel S'Algar is so popular with bridge players that we're going back to Menorca for the thirty-second time in October 2003.

Choose either a hotel room or an apartment. All bedrooms are self-contained with television, telephone, bath, shower and its own balcony. Apartments are situated about 150 metres from the S'Algar Hotel. Each apartment consists of two twin bedrooms, living room, kitchen, dining area, bathroom and a large balcony or terrace.

Accommodation is full board. Meals are taken in the hotel dining room with the option of lunching at one of the many snack bars. Bridge is played in the comfort of a soundproof, air-conditioned poolside room

and, as in previous years, is under the friendly direction of **Graham Hedley** ably assisted by his wife Berry. Occasional seminars on specific subjects will be held.

Bridge is licensed by the WBU and master points will be awarded at all sessions. Prizes are presented to the winners of all events including open pairs.

Demand for apartments and sea-view hotel rooms always exceeds supply. If you have a specific accommodation request please book early to avoid disappointment

Choose the most convenient airport for you. Holiday prices are based on this and are: Gatwick **£789**; Birmingham, Bristol, Luton or Stansted **£799**; Cardiff, East Midlands, Humberside, Manchester or Teesside **£809**; Leeds/Bradford **£819**; Glasgow or Newcastle **£829**.

Price includes: air travel; airport taxes; insurance; transfers airport/resort; full board; full bridge programme; prizes; events as specified.

(Subject to single supplement)



Magic Madeira

ATLANTIC BAY HOTEL near FUNCHAL

17th November -1st December 2003

Martin and Judy Holcombe have been involved with running bridge holidays for many years and have selected the Atlantic Bay Hotel for their first venture in Madeira.

Spectacularly situated on one of the island's beachfront sites, Praia Formosa, this four star hotel offers mainly sea view twin bedrooms with balconies. These are generously sized and equipped with a small kitchenette - ideal for preparing light snacks. Comfortable lounges, spacious dining room and good leisure facilities complement the accommodation. Located close to Funchal, the Atlantic Bay Hotel is the perfect setting for our unique blend of bridge and relaxation.

Bridge is played in the comfort of an air-conditioned room and is under the friendly direction of **Graham Hedley** ably assisted, as always, by his wife Berry. They have devised an enjoyable programme of bridge which will appeal to players of all standards. Occasional seminars on specific subjects will be held. Master points will be awarded at all sessions and there are prizes for the winners of all events.

The cost of this holiday is **£789.00** which includes half board, bridge fees, insurance*, entertainment, transfers and airport duties. Single supplement **£99**. Prices based on Gatwick departures. Manchester, Birmingham, Bristol, East Midlands, Exeter, Luton, Bournemouth, Cardiff, and Glasgow flights available at a supplement. *Deduct £20 if not required.

Improve with Andrew Kambites

HOTEL S'ALGAR, MENORCA - April 2003

If you enjoy bridge but want to know more, this week provides a perfect opportunity to improve all aspects of your game under the expert guidance and tuition of one of bridge's more flamboyant yet respected teachers. **Andrew Kambites**, who is just one of three fully qualified EBUTA teachers on hand to guide and assist, has devised a programme to appeal to beginners and improvers alike.

2002 was fully booked, so be sure to make your reservation now. Gatwick and Manchester departures, **full board**, all-inclusive prices from only **£459.00**. (Subject to Single Supplement)

Grasmere Thistle

ONE WEEK - 7th-14th March 2003

Lakeside, country house style and atmosphere and the ideal location for exploring the surrounding countryside. Director **Graham Hedley**. Cost per person half board **£349.00**.

Vilamoura Value

HOTEL ATLANTIS 29th January-12th February 2004

This is one of our most popular holidays and is always in great demand. We are back there in 2004 with **Graham Hedley** directing so call us now to make your reservation.

Full details, brochures and booking forms for all the above holidays from: **Martin Holcombe**

FIRST FOR BRIDGE

4 The Lyes, Congressbury, Bristol BS49 5HF

Tel: 01934 876500, Fax: 835819, Mobile: 07771 901579



Keep up to date with all the latest First for Bridge news by logging on to www.bridge-holidays.com. E-mail - info@bridge-holidays.com

Menorca holidays operated by Celtic Line Travel Ltd. ATOL No: 1772. Algarve holiday by Sage Holidays Ltd. ATOL No: 0808 and Madeira holiday by Atlantic Travel ATOL No: 2704.



Master Point of View

Noelle Bond

Towards the end of March, as usual, I completed all my work, such as reports for the WBU treasurer, which does not actually involve entering Master Points, lubricated my points counting finger, trimmed my nails so they don't click on the keyboard, and prepared for the year end rush. Mike looked out the window and called "The postman's been", but when I checked our mail catcher it was quite empty. "This end of year is going to be easy" I thought, especially when only a couple of letters arrived the next day. But of course following days made up for the lack and I was soon forty-odd letters behind. And as usual at this time of year (perhaps it's spring that does it) after months of delivering at midday, the postman walks his route the other way around and wakes me at seven for the insufficient postage and recorded deliveries.

As the stream of mail began to flood in (ooh, a metaphor) I noticed something new. A number of envelopes looked as if they'd been carefully slit open with a paperknife. This only happened to self-seal envelopes, I wondered if the others were being steamed open and resealed. (Did you ever try that as a child? I did, lots of steam in the kitchen, hot fingers, and afterwards a letter that looked as if the dog had been at it.) Perhaps someone was hoping to find cheques inside, but more likely the Post Office sorting machines had a new feature. But with all these, as far as I could tell, no points were lost.

And then I received a large brown envelope, perfectly (self) sealed, nicely addressed, but completely empty. I wondered whether the member had mistakenly mailed the points in the SAE, which has happened before. A few days later I had a call: some of the points which were put in that brown envelope had been returned, the sender identified by the still pristine SAE among them. The remainder had vanished into that Post Office limbo from which things only rarely return. I do know that lost points have been unearthed from it on a couple of occasions, though presumably you must ask at the correct sorting office. I imagine that all around the country huge rooms are filled with unclaimed bundles, packets, scraps of paper and, of course, Master Point slips. So, too late for this year end, more advice: sellotape across the top edge and on the flap to help preserve your letters. However one addressed to "Noelle Bond, Master Point Thingy" arrived quite safely. Or did it? I haven't made up my mind yet!

I've received lots of kind letters and notes, but very few stories. One new member on his first promotion did say that he would now be able to call himself something different from what his partner usually does.

Earlier, I mentioned sending reports to the treasurer. This always provokes queries which take me hours to resolve. This year she sent a variety of interrogating E-mails but at that time I was ill in bed with a large bowl beside me (I bet you didn't want to know that) and by the time I revived she had sorted everything out herself. I may adopt this tactic next year (although I hope to forgo the bowl).

I'd be very interested to know if anyone actually looks at the Master Point section of the WBU website. Perhaps you could let me know Yea or Nay when sending in points. And if you do look, tell me what you think of it.

I'll end with a Limerick I was sent by Jurdy Pearce:

*There once was a player named Sid
Who was always reluctant to bid
He picked up four aces
Made several faces
Then passed, keeping all his points hid.*

I rather think I've played with him, but I shouldn't be too critical: one man I'd arranged to partner recently decided to have a quadruple heart bypass instead.

(Noelle@glanmor45.freemove.co.uk)

Noelle

List of promotions for each rank from 30th January 2003 to 28th April 2003

Club Master		John James	A	Kathleen Thorpe	BEN
Dawn Claxton	AA	Michael Jones	BRE	Derek Walmsley	PR
John Donnelly	BEN	Ian Mullett	PN	William O Williams	WS
Maureen Graham	GA	Chris Overton	H	Master	
Logan Jack	BRE	John Owen	Y	Elwin Ackon	BEN
K Allan James	RH	Lilian Richards	MB	Patricia Ackon	BEN
Eric E Johnson	D	Ann Roberts	BEN	Roe Bissett	CRI
Christine Jones	S	Allan Robins	MG	Jean Chuter	MON
Bernard Martin	R	Verena Russell-Clarke	AG	Sue Coffin	C
David Opie	BRE	Betty Shirley	LD	Malcolm Cousins	BRE
Alun Richards	A	Arthur Sylvester	R	Gail Evans	AM
Mary Sharp	S	Mike Wilson	C	Sheena Gray	PN
John Sharp	S	County Master		Robert Griffiths	A
Ruth Spong	CAR	Sheila Breeze	WS	Phyllis Hancock	BEN
John Spong	CAR	Pat Clayton	AG	Evarard Kerslake	BV
Sandra Thomas	Y	Eirwen Griffith	PW	Tommy Moore	BV
Dorothy Wise	GA	Betty Hollis	PN	Brenig Powell	BV
Local Master		Gay Hughes	BEN	Mair Raw-Rees	A
David Batterley	AA	John Marshall	C	Alun Richards	MB
Valerie Bell	BRE	Angela Mayner	PR	Brian Rossiter	CRI
Patrick Bolger	MH	Gillian O'Keeffe	C	Maril Rossiter	CRI
Margaret Bolger	MH	Winnie Phillips	AM	Jennifer Wardell	CAR
Christine Bowman	W	Tony Pinder	PV	Doreen Willis	BV
Cecilia Byrne	WS	Rita Potter	BEN	Malcolm Young	MON
Simon Gottschalk	GA	Betty Reading	PR		
Gwyn Hall	PN	Wendy Redding	GA		
Val Hetheridge	PN	Glenys Thompson	WS		

(Continued on next page)

Promotion List (contd from Page 17)

Advanced Master

Hugh Arnold S
Chris Blackman CAS
Catherine Evans AM
Valerie Gould CAS
Eivona James GA
Megan Jones WS
Ann Lewis AA
Margaret O'Nions MB

One Star Master

Kirsten Arnott VOG
John Arundale LD
Pearl Browning CBY
Roland Dewsberry MG
Margaret Doig D
W Eric Evans PD
Julian Evans R
Ian Haston H
Anthony Jenkins NT
Sally Jones MB
Patrick Llewelyn Y
David Lloyd LP
Joyce Lowther AG
John Lowther AG
Stan Newman WS
Michael O'Leary MG
Amy Owen VOG
Brian Roderick BV
Robin Thomas WS
Janet Turner WS

Two Star Master

John Anderson D
Sid Craven MB
Ailsa Price Davies P
Les Fletcher CBY
Ralph Lamb A
Aileen Lloyd C
Christine Norman MB
Brian Saunders MB
Barbara Saunders MB

Three Star Master

Jill Alexander C
Gwen Davies CD
Anne Davies S
Denzil Evans CAR
Marie George C
Josie Hutchinson GA
Joan Jenkins SU
Maureen John MB
Ann E Johnson MB
Diana Kendrick BV
Rick Law S
Terry Reilly VOG
John Valentine STD
Dorothy Williams F

Four Star Master

David Bellis Y
Ann Dolan AM
Peggy Edwards M
Yvonne Evans F
Sheila Williams GA

Five Star Master

Margaret James A
Colleen Lloyd LD
Muriel Maslin R
Peggy Morgan MB
Hannah Roberts PV
Anne Warhurst LD
David Williams W
David Wright VOG

Tournament Master

Joyce Dale P
John Raymond MG

Regional Master

Gerald Gould PN
Elwyn Roberts W
Graham Simmons MB
John Walker CB

Premier Regional Master

Gareth Jones PD
David Letheren MB

National Master

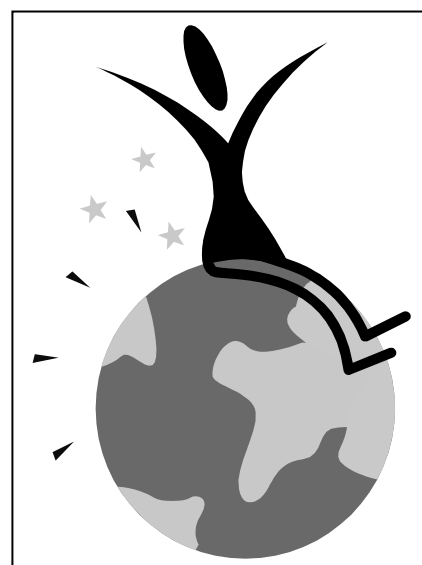
Keith Jones L
Mike Whitelock H
Joy Whitelock H

Premier Master

Glenda Dorling NT

Life Master

Peter Nickson W
Graham Radclift Jones GA
Mark Roderick BV



Grand Master

Mike Best R
Rob Charlesworth AM
Geoff Evans C

FORTHCOMING EVENTS

Welsh Bridge Union AGM

18th May 2003

11.30 a.m. at Gwent Bridge Academy, Clayton Street, Newport. All members are encouraged to attend. The **Perry Shield** (Open) and **Spickett Bowl** (Ladies) inter-area teams championship will be held on **17th and 18th May** at the same venue. Spectators welcome at these, always keenly-fought, events.

Welsh Seniors Congress

23rd-26th May 2003

at County Hall, Cwmbran.

Entries to Annie Favager, 3 Albert Crescent, Penarth CF64 1DA, ☎ 029 2070 8004, email annie.favager@ntlworld.com.

Lady Milne Trophy

6th-8th June 2003

The Women's Home International tournament will be held this year at the Moat House, Cardiff. Please come and support Wales's women players: Mary Moore and Irene Thomas; Liz Atkinson and Margaret Lane; Diane Kurbalija and Jill Casey, against the combined might of England, Scotland, Northern Ireland and the Republic of Ireland.

The vu-graph theatre will be open throughout, free of charge. Please contact Linda Greenland on 029 2025 5162 or email deri31@ntlworld.com for further information.

Swansea Congress

28th-29th June 2003

In aid of the Wales Air Ambulance

Saturday, 2.00 and 7.00

Pairs

Entry fee £8.00

Sunday 1.00

Swiss Teams

Entry fee £8.00

Entries to: Diana Panniers, 13 Llewellyn Street, Sketty, Swansea SA2 9AL
Tel. 01792 297081, email dipanniers@sketty.fsworld.co.uk

Cardiff Café Bridge

6th July 2003

Contact Frank and Jane Scott-Verdon at 37 Heol Hendre, Rhiwbina, Cardiff CF14 6PL, ☎ 029 2069 3225, email franksv@ntlworld.com

Llandudno Swiss Pairs (Green Point) 12th-13th July 2003

Entries to Jill Knight, 16 Bay View Road, Benllech, Anglesey LL74 8TT, ☎ 01248 853033, email polly64335@aol.com (see page 11 for further details).

Mid Wales Congress

18th-20th July 2003

Metropole Hotel, Llandrindod Wells. Entries to Cecelia McCreary, 4 Trenchard, Parclyn, Cardigan SA43 2DL, ☎ 01239 811255, email celia.mccreary@virgin.net



Information page (Please mark changes and corrections in your copy of the Journal)

Item	Journal page	Details
Change of Club Secretary	5	The new secretary of Old Hall Bridge Club is Brenda Emett, 1 Talyfan Close, Cowbridge CF71 7HT, ☎ 01446 772312.
Change of Club Secretary	6	The new secretary of Castle Bridge Club is Jean Cufley, contact details as for Newtown Bridge Club.
Change of Club Secretary	6	The Secretary of Dolgellau Bridge Club, Andrew Fraser, sadly died at the end of April. The new Secretary is Betty Dawson, 49 Faenol Isaf, Tywyn, Gwynedd LL36 0DW, ☎ and fax: 01654 710 005, email rd@faenol.demon.co.uk
Change of club details	10	South Pembrokeshire Bridge Club now meets at Pembroke Power Station Sports & Social Club, 45 Main Street, Pembroke on Wednesdays at 7.15 p.m. It no longer meets on Saturdays.
New email address	10, 15	Diana Panniers (Secretary of Swansea Bridge Club and of the Porthcawl Congress) now has an email address: dipanniers@sketty.fsworld.co.uk
Change of congress date	59	The Swansea Congress will now be held on 28 th and 29 th June 2003, NOT on 21 st and 22 nd as indicated in the WBU Journal. Contact Diana Panniers (see Page 19).

INTERNATIONAL OPPORTUNITY OPEN TO ALL

1st European Open Championships, Menton, 14th-28th June 2003: Mixed Teams, Mixed Pairs, Open, Women's and Senior Teams, Open, Women's and Senior Pairs, Side Games.

Open to all registered members in good standing with their Federation, from any WBF member country. *Contact Linda Greenland for details.*



Copy deadline for next newsletter

Articles, hands, information, obituaries, photographs are all welcome: send to Laura on laura.woodruff@ukonline.co.uk no later than 31st August 2003. If you have no access to email, hard copy may as a last resort be sent to Hall Farm, North Cornelly, Bridgend CF33 4HR but allow extra time for typing. I now have a scanner, so photos are possible, but it's easier if you can email them all the same.

Thanks to all who contributed to this issue.